


Linear sets with super linear bushings , tandem

**Linear sets, R1087 Open**

**Linear sets, R1034 Open, adjustable**

**Design**

- Lightweight precision tandem housing (aluminum)
- Two super linear bushings 
- Two top wiper seals
- Reference edge (for tandem linear set, open, adjustable)
- Relubricatable

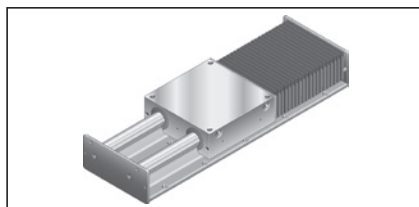


Shaft Ø d (mm)	Material number LSATO-A- ... -DD	Weight (kg)
12	R1087 612 20	0.22
16	R1087 616 20	0.34
20	R1087 620 20	0.62
25	R1087 625 20	1.17
30	R1087 630 20	1.68
40	R1087 640 20	3.15
50	R1087 650 20	5.50



Shaft Ø d (mm)	Material number LSATOE-A-20-DD	Weight (kg)
12	R1034 612 20	0.22
16	R1034 616 20	0.34
20	R1034 620 20	0.62
25	R1034 625 20	1.17
30	R1034 630 20	1.68
40	R1034 640 20	3.15
50	R1034 650 20	5.50

Also available as linear slides.  
See R310DE 3001 in the “Linear slides” catalog.

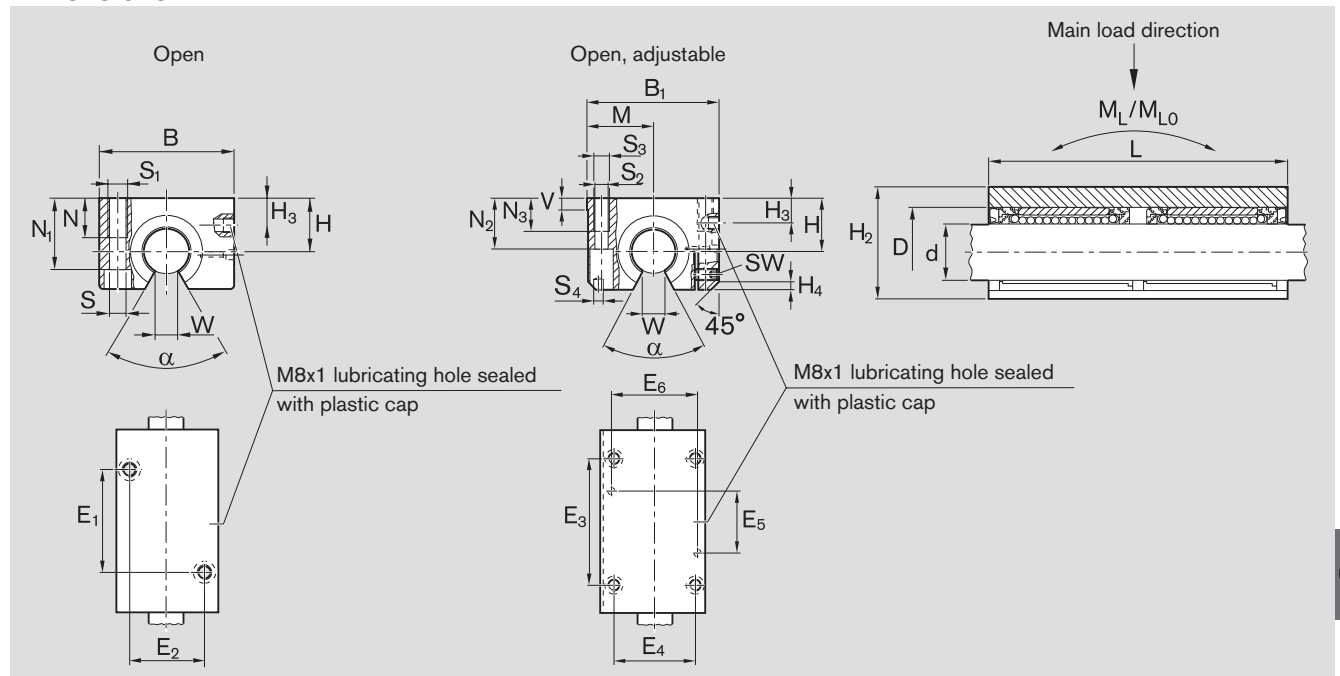


**Explanation of sample short product name**

LS	A	TO	E	A	20	DD
Linear set	Aluminum	Tandem, open	Adjustable	Super 	Ø 20	Two seals

See page 39 for more information on short product names.

Dimensions



Dimensions (mm)																											
Ø d	D	H <sup>2)</sup> +0.008 -0.016	H <sub>2</sub>	H <sub>3</sub>	M <sup>2)</sup> ±0.01	B	B <sub>1</sub>	L	E <sub>1</sub> <sup>3)</sup> ±0.15	E <sub>2</sub> <sup>3)</sup> ±0.15	E <sub>3</sub> <sup>3)</sup> ±0.15	E <sub>4</sub> <sup>3)</sup> ±0.15	E <sub>5</sub>	E <sub>6</sub>	S <sup>4)</sup>	S <sub>1</sub>	S <sub>2</sub> <sup>5)</sup>	S <sub>3</sub>	S <sub>4</sub> <sup>6)</sup>	N	N <sub>1</sub>	N <sub>2</sub>	N <sub>3</sub>	V	SW	W <sup>7)</sup>	H <sub>4</sub>
12	22	18	30 <sup>1)</sup>	10	21.5	42	43	76	40	30	56	32	24	34	5.3	M6	4.3	M5	4	13	25	16.5	11	5.0	2.5	6.5	1.5
16	26	22	35	12	26.5	50	53	84	45	36	64	40	28	42	5.3	M6	5.3	M6	4	13	29.5	21.0	13	5.0	2.5	9.0	2.5
20	32	25	42	13	30.0	60	60	104	55	45	76	45	32	50	6.6	M8	6.6	M8	5	18	35.5	24.0	18	5.0	2.5	9.0	3.5
25	40	30	51	15	39.0	74	78	130	70	54	94	60	42	64	8.4	M10	8.4	M10	6	22	43.0	29.0	22	6.5	3.0	11.5	4.0
30	47	35	60	16	43.5	84	87	152	85	62	106	68	52	72	10.5	M12	8.4	M10	6	26	50.5	34.0	22	8.0	3.0	14.0	6.0
40	62	45	77	20	54.0	108	108	176	100	80	124	86	60	90	13.5	M16	10.5	M12	8	34	66.0	44.0	26	10	4.0	19.5	6.0
50	75	50	88	10	66.0	130	132	224	125	100	160	108	80	108	13.5	M16	13.5	M16	10	34	77.0	49.0	35	12	5.0	22.5	6.0

Ø d (mm)	Angle α (°)	Radial clearance <sup>8)</sup> (µm)		Load ratings <sup>9)</sup> (N)		Linear torque (Nm)	
		R1087 h6 shaft	R1034	dyn. C	stat. C <sub>0</sub>	dyn. M <sub>L</sub>	stat. M <sub>L0</sub>
12	66	+28 -1	Comes clamped to h5 shaft (lower limit) and set to zero clearance	1,720	1,020	11	7
16	68	+28 -1		2,430	1,660	18	13
20	55	+31 -2		4,170	2,360	60	47
25	57	+31 -2		8,180	4,940	141	86
30	57	+31 -2		8,150	5,760	163	116
40	56	+35 -3		14,000	8,960	328	212
50	54	+35 -3		20,300	13,240	630	415

- 1) H<sub>2</sub> is 28 mm for an open, adjustable linear set.
- 2) Clamped (fastened) in relation to Ø d.
- 3) Shaft diameter 50: Tolerance ±0.2
- 4) DIN 6912-8.8 fastening bolts.
- 5) ISO 4762-8.8 fastening bolts.
- 6) Pin centering.
- 7) Minimum size in relation to Ø d.
- 8) Clamped (fastened).
- 9) Load rating when both linear bushings are under equal load. The load ratings apply for the main load direction.

The dynamic load ratings are based on a total travel of 100,000 m.  
When based on 50,000 m, the C values in the table are multiplied by 1.26.

**⚠** Refer to the diagrams on page 41 for load in the direction of opening.